

# SHIRLEY CAESAR AND FRIENDS

OLETA ADAMS

KIM BURRELL

FAITH EVANS

KIRK FRANKLIN

GLADYS KNIGHT

PATTI LABELLE

DOTTIE PEOPLES

DESMOND PRINGLE



1. STARTING ALL OVER AGAIN 5:00  
WITH OLETA ADAMS
2. I'M READY 4:52  
WITH KIRK FRANKLIN \*
3. JUST A CLOSER WALK WITH THEE 4:49  
FEATURING DESMOND PRINGLE \*
4. YOU ARE MY FRIEND 4:10  
WITH PATTI LABELLE \*
5. I'M GONNA WAIT 4:28  
WITH THE CAESAR SINGERS AND  
THE GREATER GRACE TEMPLE  
COMMUNITY CHURCH CHOIR \*
6. HURTING WOMAN 5:00  
WITH FAITH EVANS \*
7. I'M BLESSED 4:33  
WITH DOTTIE PEOPLES
8. WE PRAISE YOU LORD 4:58  
WITH KIM BURRELL
9. I KNOW IT WAS THE BLOOD 5:00  
WITH GLADYS KNIGHT AND PATTI LABELLE \*
10. HOME 3:20

EXECUTIVE PRODUCER: DESMOND PRINGLE

PRODUCED BY ROGER RYAN FOR AFTER TOUCH MUSIC  
AND SHIRLEY CAESAR

\*PRODUCED BY BUBBA SMITH AND SHIRLEY CAESAR  
WITH ADDITIONAL PRODUCTION  
BY ROGER RYAN FOR AFTER TOUCH MUSIC

\*PRODUCED BY  
JAMES R. "BUDD" ELLISON  
AND SHIRLEY CAESAR WITH  
ADDITIONAL PRODUCTION  
BY ROGER RYAN FOR  
AFTER TOUCH MUSIC

\*PRODUCED BY  
ROGER RYAN AND  
RANDALL RYAN FOR  
AFTER TOUCH MUSIC

GSGSXX



WWW.WORDLABELGROUP.COM

WWW.SHIRLEYCAESAR.COM

® & © 2003 WORD ENTERTAINMENT LLC, A WARNER/CURB COMPANY.  
MANUFACTURED BY WEA. UNAUTHORIZED REPRODUCTION PROHIBITED  
BY LAW. PRINTED IN U.S.A.



**STARTING  
ALL OVER  
AGAIN**

FEATURING  
OLETA ADAMS

WRITTEN BY  
SHIRLEY CAESAR,  
DANNY GRAHAM

SHU-BEL MUSIC  
(SESAC)/GOSPEL  
MARQUIS (ASCAP)  
(ADM. BY CAESAR-  
WILLIAMS MUSIC)

**I'M READY**

FEATURING  
KIRK FRANKLIN

WRITTEN BY  
KIRK FRANKLIN

KERRION MUSIC (BMI)  
(ADM. BY LILLY MACK  
MUSIC)/LILLY MACK  
MUSIC (BMI)

**JUST A  
CLOSER WALK  
WITH THEE**

FEATURING  
DESMOND PRINGLE

TRADITIONAL  
FOLK SONG

ARRANGED BY  
MICHAEL MATHIS

JAMDO JAMDO MUSIC  
(ASCAP)/ CAESAR-  
WILLIAMS MUSIC  
(ASCAP)

**YOU ARE  
MY FRIEND**

FEATURING  
PATTI LABELLE

WRITTEN BY  
PATTI LABELLE,  
ARMSTEAD EDWARDS,  
BUD ELLISON

ZURI MUSIC (BMI)

**I'M GONNA WAIT**

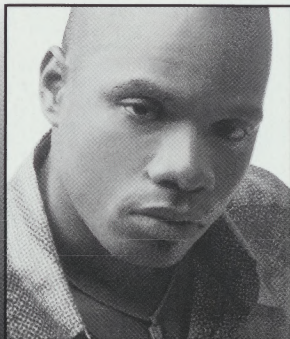
FEATURING  
THE CAESAR SINGERS  
AND  
THE GREATER GRACE  
TEMPLE COMMUNITY  
CHURCH CHOIR

WRITTEN BY  
SHIRLEY CAESAR

SHU-BEL MUSIC (SESAC)



**OLETA ADAMS**



**KIRK FRANKLIN**



**DESMOND PRINGLE**



**PATTI LaBELLE**

## HURTING WOMAN

FEATURING  
FAITH EVANS

WRITTEN BY  
SHIRLEY CAESAR,  
BILLY THOMPSON

SHU-BEL MUSIC  
(SESAC)/BILBECK  
PUBLISHING (BMI)(ADM.  
BY SHU-BEL MUSIC)

## I'M BLESSED

FEATURING  
DOTTIE PEOPLES

WRITTEN BY  
SHIRLEY CAESAR,  
DANNY GRAHAM

SHU-BEL MUSIC  
(SESAC)/GOSPEL  
MARQUIS (ASCAP)  
(ADM. BY CAESAR-  
WILLIAMS MUSIC)

## WE PRAISE YOU LORD

FEATURING  
KIM BURRELL

WRITTEN BY  
SHIRLEY CAESAR,  
DANNY GRAHAM,  
ROGER RYAN

SHU-BEL MUSIC  
(SESAC)/GOSPEL  
MARQUIS (ASCAP)(ADM.  
BY CAESAR-WILLIAMS  
MUSIC)/ROGER RYAN  
MUSIC (BMI)

## I KNOW IT WAS THE BLOOD

FEATURING  
GLADYS KNIGHT  
AND PATTI LABELLE

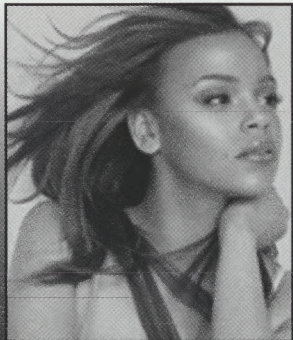
PUBLIC DOMAIN

ARRANGED BY  
SHIRLEY CAESAR

SHU-BEL MUSIC (SESAC)

## HOME

WRITTEN BY  
ROGER RYAN  
ROGER RYAN MUSIC  
(BMI)



FAITH EVANS



DOTTIE PEOPLES



KIM BURRELL



GLADYS KNIGHT



SHIRLEY CAESAR:

ROLAND LUNDY AND LOREN BALMAN, THANK YOU FOR YOUR VISION FOR THIS PROJECT. TO MALCOLM MIMMS, BARRY LANDIS AND SHAWN McSPADDEN, I APPRECIATE YOUR SUSTAINING THE VISION. TO BUBBA SMITH FOR PULLING THIS ALBUM TOGETHER; ALVIN WILLIAMS AND CHERYL MOORE HARRIS FOR DILIGENTLY GETTING THE BALL ROLLING; MY UTMOST GRATITUDE TO ROGER RYAN WHO WITH ALL HIS EXPERTISE AND MUSICAL ABILITIES BROUGHT EVERYTHING TO FRUITION; TO DESMOND PRINGLE FOR HIS WONDERFUL TALENT AND SINGING A DUET WITH ME, BUT MOST OF ALL FOR PICKING UP AND FINISHING WHERE ALVIN LEFT OFF; TO ALAN LITTEN WHO BECAME A PART OF THE ACTUAL PROJECT, WORKING MANY HOURS TO MAKE A WONDERFUL ALBUM; TO MY FRIENDS AND DUETS PARTNERS,

THANK YOU FOR BLESSING ME WITH YOUR AMAZING VOCAL TALENTS - THE MELODIOUS VOICE, KIM BURRELL, YOU ARE AWESOME; THE GOLDEN VOICE, OLETA ADAMS, YOU ARE AN INSPIRATION; THE VERY TALENTED FAITH EVANS, I REALLY ENJOYED WORKING WITH YOU; DOTTIE PEOPLES, MY LITTLE SISTER WHOM I LOVE DEARLY; KIRK FRANKLIN, YOUR TALENT IS PHENOMENALLY IMPECCABLE; THE VINTAGE TRADEMARK VOICES OF GLADYS KNIGHT AND PATTI LABELLE AND OF COURSE I CANNOT LEAVE OUT MY SUPPORTING CAST THE CAESAR SINGERS AND MY LONG-TIME WONDERFUL FRIEND AND MANAGER, CAROLYN SANDERS. TO THE WORD/WARNER BROS STAFF, WORD DISTRIBUTION AND WEA THANK YOU FOR YOUR HARD WORK. I KNOW YOU WILL DO YOUR BEST TO PUT A COPY OF THIS ALBUM IN EVERY HOME. TO ALL THE GOSPEL ANNOUNCERS, RADIO PERSONALITIES, AND RETAILERS, THANK YOU FOR YOUR SUPPORT - YOU KNOW I LOVE AND APPRECIATE YOU - WITHOUT YOU MY MUSIC WOULD NOT BE HEARD. TO ALL THE PEOPLE I MEET WHEN I'M ON THE ROAD, THANK YOU FOR YOUR PRAYERS AND SUPPORT. MOST OF ALL TO MY HUSBAND BISHOP HAROLD IVORY WILLIAMS AND THE MEMBERS OF MY CHURCH, MT. CALVARY WORD OF FAITH - THANK YOU FOR YOUR PRAYERS - I LOVE YOU.

ROGER RYAN:

I THANK GOD FOR DIVINE INSPIRATION, JAMIE KINER, FRED VAUGHN, ALAN LITTEN, JEFF PITZER, CHRIS RAINWATER, DA'DRA CRAWFORD-GREATHOUSE, KIM FLEMING (SPECIAL PEOPLE), THE NASHVILLE WRECKING CREW - DEE DEE, BRYANT, JOHNNY, DANA, VIRGIL (THE LAST LINE OF DEFENSE!), PASTOR BREONUS MITCHELL, THE GREATER GRACE TEMPLE COMMUNITY CHURCH CHOIR - YOU MADE THE DIFFERENCE ON THIS RECORD, EPIPHANY (SHERRIE, SHANDRA, CANDRA, KIM AND TIFFANY) - YOU WENT ABOVE AND BEYOND, MOM AND DAD, RANDY AND MILES (MY PRODUCTION PARTNERS), CHAAREA - FOR CARING, DESMOND PRINGLE - THANK YOU FOR BELIEVING IN ME, LAST BUT NOT LEAST, THANK YOU SHIRLEY CAESAR FOR TRUSTING ME AND GIVING ME THE OPPORTUNITY.

EXECUTIVE PRODUCER: DESMOND PRINGLE

STARTING ALL OVER, I'M BLESSED, WE PRAISE YOU LORD AND HOME  
PRODUCED BY ROGER RYAN FOR AFTER TOUCH MUSIC AND SHIRLEY CAESAR  
HURTING WOMAN PRODUCED BY ROGER RYAN AND RANDALL RYAN FOR AFTER TOUCH MUSIC

RECORDED AT QUAD STUDIOS, NASHVILLE, TN, SOUNDSTATION STUDIOS, FRANKLIN, TN AND  
AFTER TOUCH STUDIOS, NASHVILLE • ENGINEERED BY ALAN LITTEN • ASSISTANT ENGINEERS:  
EARL DRAKE, CHRIS RAINWATER • DIGITAL EDITING BY ALAN LITTEN

MUSICIANS:

DRUMS: ELIJAH D. HOLT • BASS GUITAR: BRYANT RUSSELL • ORGAN: VIRGIL STRAFORD •  
KEYBOARDS: ROGER RYAN AND FRED VAUGHN • GUITARS: JOHNNY EDWARDS AND DANA REED  
• CHOIR ARRANGEMENTS: FRED VAUGHN AND ROGER RYAN • CHOIR: GREATER GRACE TEMPLE  
COMMUNITY CHURCH CHOIR • BACKGROUND VOCALS: DUAWNE STARLING, SHANDRA PENIX,  
DA'DRA CRAWFORD-GREATHOUSE, CHRIS WILLIS, KIMBERLY MONT, KIM FLEMING, SHERRIE  
KIBBLE, TIFFANY RANSOM, CANDRA CARR, STEVE CRAWFORD

STRINGS ARRANGED AND PERFORMED BY ROGER RYAN • HORN ARRANGEMENTS BY LLOYD  
BARRY • HORNS: MIKE HAYNES (TRUMPET), STEVE PATRICK (TRUMPET), BARRY GREEN  
(TROMBONE), AND MARK DOUTHIT (SAXOPHONE)

I KNOW IT WAS THE BLOOD, I'M READY, I'M GONNA WAIT AND JUST A CLOSER WALK WITH THEE  
PRODUCED BY BUBBA SMITH AND SHIRLEY CAESAR  
WITH ADDITIONAL PRODUCTION BY ROGER RYAN FOR AFTER TOUCH MUSIC

YOU ARE MY FRIEND PRODUCED BY JAMES R. "BUDD" ELLISON AND SHIRLEY CAESAR  
WITH ADDITIONAL PRODUCTION BY ROGER RYAN FOR AFTER TOUCH MUSIC

ENGINEERED BY ED STASIUM, JOE NEIL, STEVE BRACEY, BRET RICHARDSON  
REMOTE RECORDING TRUCK: SAM'S TAPE TRUCK, ATLANTA, GA

ADDITIONAL PRODUCTION RECORDED AT QUAD STUDIOS, NASHVILLE, SOUNDSTATION STUDIOS,  
FRANKLIN AND AFTER TOUCH STUDIOS, NASHVILLE AND REFLECTION SOUND STUDIOS, CHARLOTTE, NC


ADDITIONAL PRODUCTION RECORDED BY ALAN LITTEN  
ASSISTANT ENGINEERS: EARL DRAKE, CHRIS RAINWATER • DIGITAL EDITING BY ALAN LITTEN

ADDITIONAL MUSICIANS:

DRUMS: ELIJAH D. HOLT • BASS GUITAR: BRYANT RUSSELL • ORGAN: VIRGIL STRAFORD •  
KEYBOARDS: ROGER RYAN AND FRED VAUGHN • GUITARS: JOHNNY EDWARDS AND DANA REED  
• CHOIR ARRANGEMENTS: FRED VAUGHN AND ROGER RYAN • CHOIR: GREATER GRACE TEMPLE  
COMMUNITY CHURCH CHOIR • BACKGROUND VOCALS: SHANDRA PENIX, KIMBERLY MONT,  
SHERRIE KIBBLE, TIFFANY RANSOM, CANDRA CARR • STRINGS ARRANGED AND PERFORMED BY  
ROGER RYAN • HORN ARRANGEMENTS BY LLOYD BARRY • HORNS: MIKE HAYNES (TRUMPET),  
STEVE PATRICK (TRUMPET), BARRY GREEN (TROMBONE) AND MARK DOUTHIT (SAXOPHONE)

MIXED BY JEFF PITZER IN THE FLOOD ZONE, BRENTWOOD • PRODUCTION COORDINATION:  
JAMIE KINER • A&R ADMINISTRATION: CHERYL H. McTYRE • MASTERED BY ERIC CONN AT INDEPENDENT  
MASTERING, NASHVILLE, TN • ROGER RYAN USES SHURE MICROPHONES AND YAMAHA KEYBOARDS

FAITH EVANS APPEARS COURTESY OF BAD BOY RECORDS • KIRK FRANKLIN APPEARS COURTESY OF  
GOSPOCENTRIC RECORDS • GLADYS KNIGHT APPEARS COURTESY OF GEFFEN RECORDS • PATTI LABELLE  
APPEARS COURTESY OF MCA RECORDS • DOTTIE PEOPLES APPEARS COURTESY OF AIR GOSPEL



MANAGEMENT AND BOOKING: CAROLYN SANDERS  
SHU-BEL MUSIC LLC  
E-MAIL: SHUBELLLC@AOL.COM

CREATIVE DIRECTOR: KATHERINE PETILLO  
CREATIVE ADMINISTRATOR: TAMMIE HARRIS CLEEK  
ART DIRECTION & DESIGN: BETH LEE  
PHOTOGRAPHY: TONY BAKER  
WARDROBE: JENNIFER KEMP  
HAIR: KENNY VEREEN  
MAKE-UP: DERRICK RUTLEDGE

FOR MORE INFORMATION ABOUT ARTIST,  
VISIT OUR WEBSITE @  
[WWW.WORDLABELGROUP.COM](http://WWW.WORDLABELGROUP.COM) AND  
[WWW.SHIRLEYCAESAR.COM](http://WWW.SHIRLEYCAESAR.COM)

WD2-886008

© 2003 WORD ENTERTAINMENT  
LLC, A WARNER/CURB COMPANY.  
MANUFACTURED BY WEA.  
UNAUTHORIZED REPRODUCTION  
PROHIBITED BY LAW.  
PRINTED IN U.S.A.





SHIRLEY  
CAESAR  
AND  
FRIENDS



EXECUTIVE PRODUCER: DESMOND PRINGLE  
WD2-886008

© 2003 WORD ENTERTAINMENT LLC, A WARNER/CURB COMPANY  
PRINTED IN U.S.A.